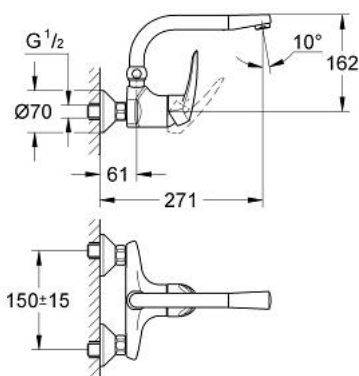


33 773 001 EURODISC KÖKSBLANDARE



PRODUKTBESKRIVNING

- Colour: Krom
- Väggmontage
- GROHE SilkMove 46 mm keramisk insats
- GROHE Long-Life-yta
- Inställbar flödesbegränsare
- Svängbar pip med vattenbegränsare
- Perlator för verktygsfritt utbyte
- S-anslutningar



An exploded view diagram of a bicycle bell assembly. The diagram shows the following components and their assembly sequence:

- Part 1:** The main bell body, which is a curved metal piece with a mounting bracket.
- Part 2:** A small circular washer or spacer that fits between the bell body and the mounting bracket.
- Part 3:** A larger circular washer or spacer that fits between the bell body and the mounting bracket.
- Part 4:** A small circular washer or spacer that fits between the bell body and the mounting bracket.
- Part 5:** A small circular washer or spacer that fits between the bell body and the mounting bracket.
- Part 6:** A small circular washer or spacer that fits between the bell body and the mounting bracket.
- Part 7:** The mounting bracket, which is a curved metal piece that fits onto the handlebar.

The diagram illustrates the assembly of the bell onto the handlebar, showing the correct orientation and placement of each component.

- 1: Spak (Spare part-nr. 46600000)
- 2: Hylsa (Spare part-nr. 46570000)
- 3: Insats (Spare part-nr. 46048000)
- 4: Skruvförband 1/2" (Spare part-nr. 45044000)
- 5: S-anslutning (Spare part-nr. 12075000)
- 5.1: Tätning (Spare part-nr. 0138600M)
- 5.2: Roset (Spare part-nr. 0221000M)
- 6: S-utloppspip (Spare part-nr. 13118000)
- 6.1: Tätningsbricka (Spare part-nr. 0128500M)
- 6.2: Strålsamlare (Spare part-nr. 13929000)
- 7: Förlängare ¾", 20 mm (Spare part-nr. 0713000M)*

* Specialtillbehör